



Intralinks SSO Setup Guide for Windows

Intralinks 24x7x365 support US: + (1) 855 208 7576 UK: +44 (0)20 7623 8500.
See Intralinks login page for other national numbers

Copyright © 2022 Intralinks, Inc. Revised September 2022

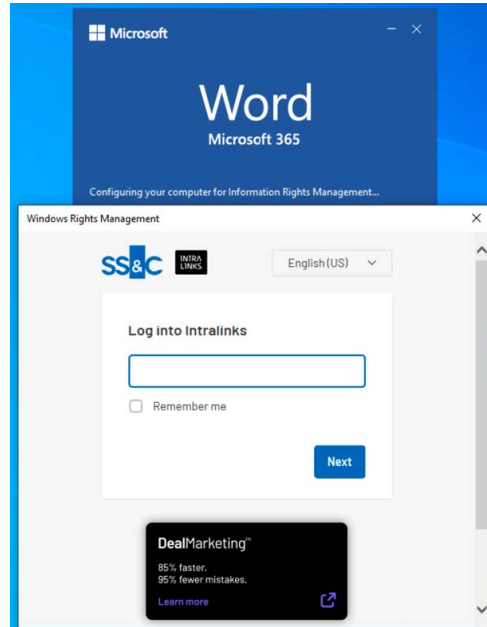
Setting up SSO for Windows

This document explains how to perform a one-time set up for Windows user machines to allow users to access IRM-protected documents when their organization uses Single Sign-On (SSO).

Microsoft Office applications are configured by default to prompt users for a username and password when they open IRM-protected files as shown in the following image:



Because SSO users do not use passwords, the setup procedures change the behavior of Microsoft Office to use the Intralinks login page that prompts for username only as shown in the following image.



Without implementing these procedures, users cannot open IRM-protected documents on their machines when their organization uses SSO. They may be able to view them online based on where they are located (US and UK only) and the type of file they opening.

The one-time setup for SSO users must be performed by a user that has Windows Administrator rights on the computer. The setup can be performed automatically using a setup file or it can be performed manually by changing the Windows registry. It is recommended that you use the setup file for the fastest and safest results.

Configuring SSO using the setup file

There are two script files that are available for configuring SSO. Use the [SSO_Quisetup.reg](#) file to set up SSO. Use the [Rollback_SSO_Quick_Setup.reg](#) file to revert the changes made by the setup file. Contact Intralinks Customer Support.

Changes made by the setup file

The Windows registry represents an organized set of data used by the operating system to configure various applications. The setup file, which is a script, adds new keys and data values to distinct paths in the Windows registry of the computer.

Office Application behavior can be modified by adding entries in the Windows registry. This script modifies Office applications to point users to the Intralinks login page. From there, Intralinks authentication is used and SSO users can log in without entering a password.

The following data is added to the registry:

- "FederationHomeRealm"="INTRALINKS_SSO"

- "EnableBrowser"=dword:00000001

This data is added to the following paths in the registry:

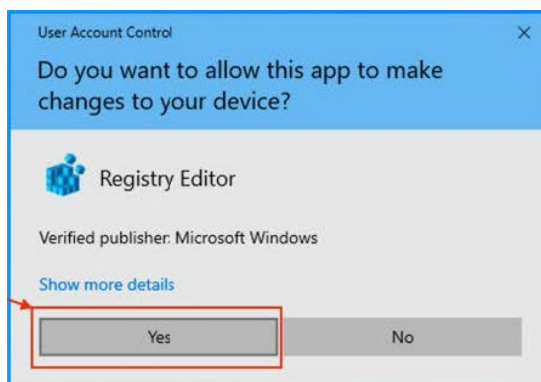
- HKEY_LOCAL_MACHINE\SOFTWARE\WOW6432Node\Microsoft\MSIPC\Federation
- HKEY_LOCAL_MACHINE\SOFTWARE\Microsoft\MSIPC\Federation
- HKEY_LOCAL_MACHINE\SoftwareWow6432Node\Microsoft\MSDRM\Federation

Running the setup file

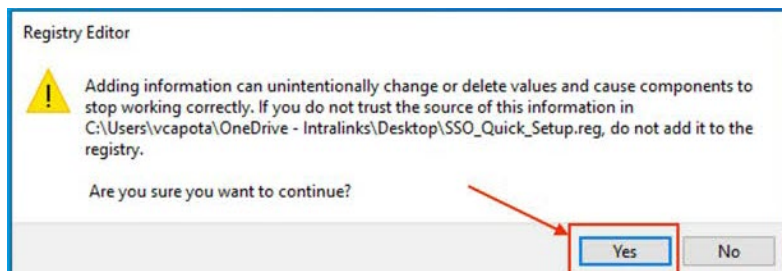
Use this procedure to automatically integrate user access with Intralinks.

► To configure SSO using the setup file

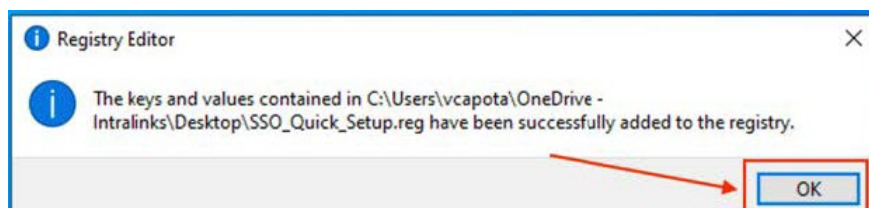
1. Double click on the [SSO_Quick_setup.reg](#) file.
2. When asked if you want to allow this app to make changes to your device, click **Yes**.



3. When the Registry Editor displays a warning about changing or deleting values, click **Yes**.



4. When the registry editor indicates that setup is complete, click **Ok**.



You can now open IRM-protected documents using your organization's credentials.

If an error occurred when running the setup file or if you are still prompted for a password when opening IRM-protected documents, either manually configure SSO or Contact Intralinks support.

Reverting changes made by the setup file

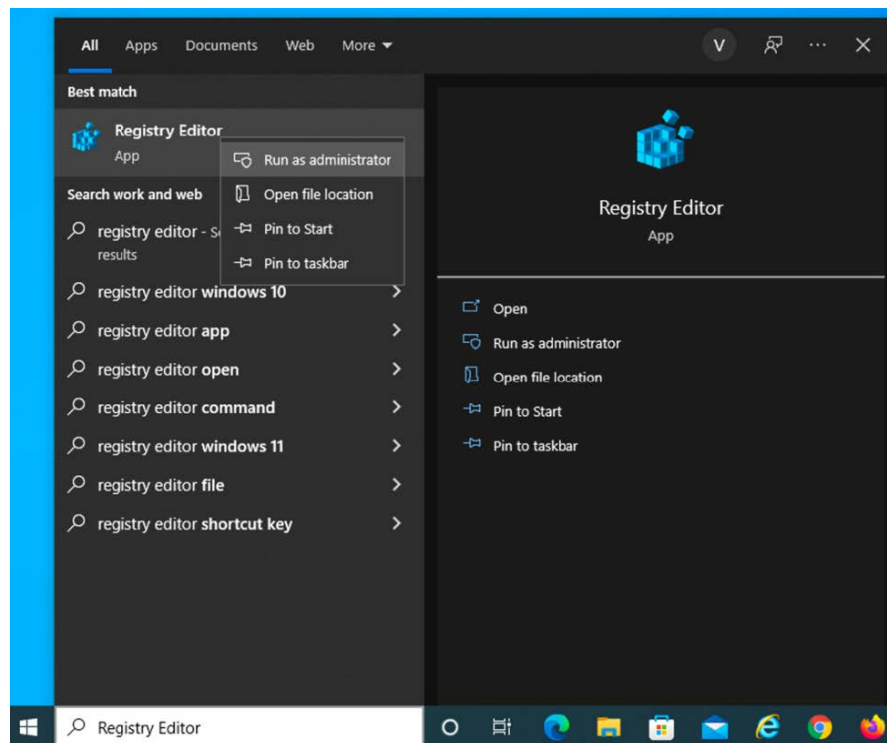
Run the Rollback_SSO_Quick_Setup.reg script.

Configuring SSO manually

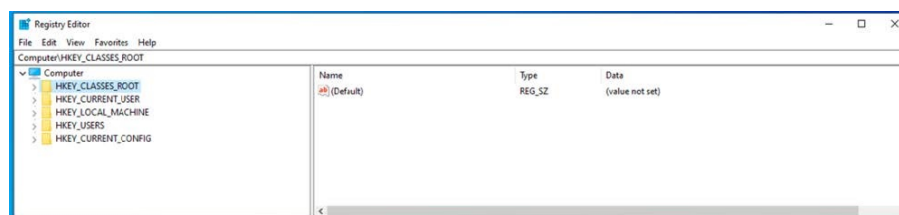
Use this procedure to manually integrate user access with Intralinks.

► To configure SSO manually

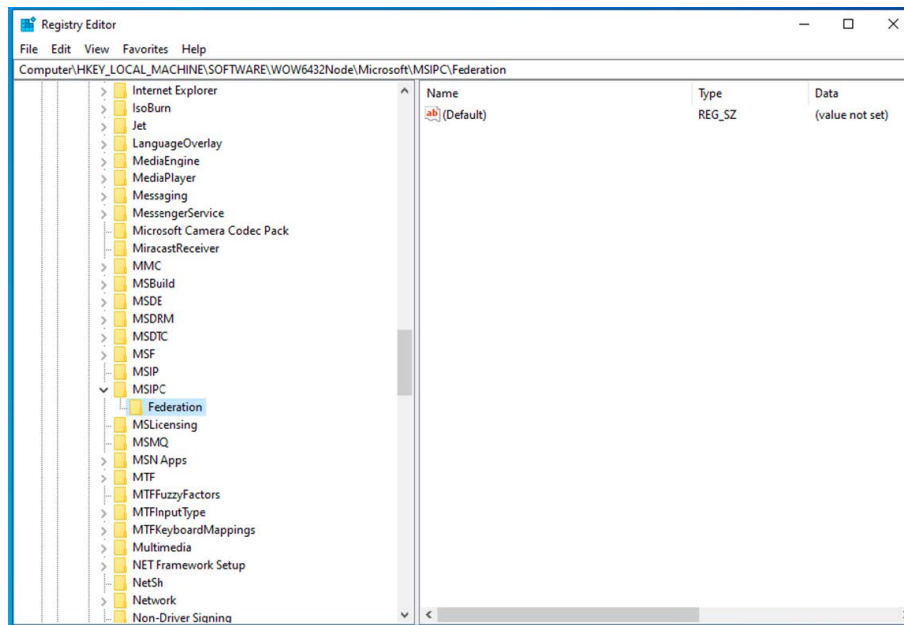
1. To open the Registry Editor, in the Windows search bar, enter **Registry Editor** and click **Run as administrator**.



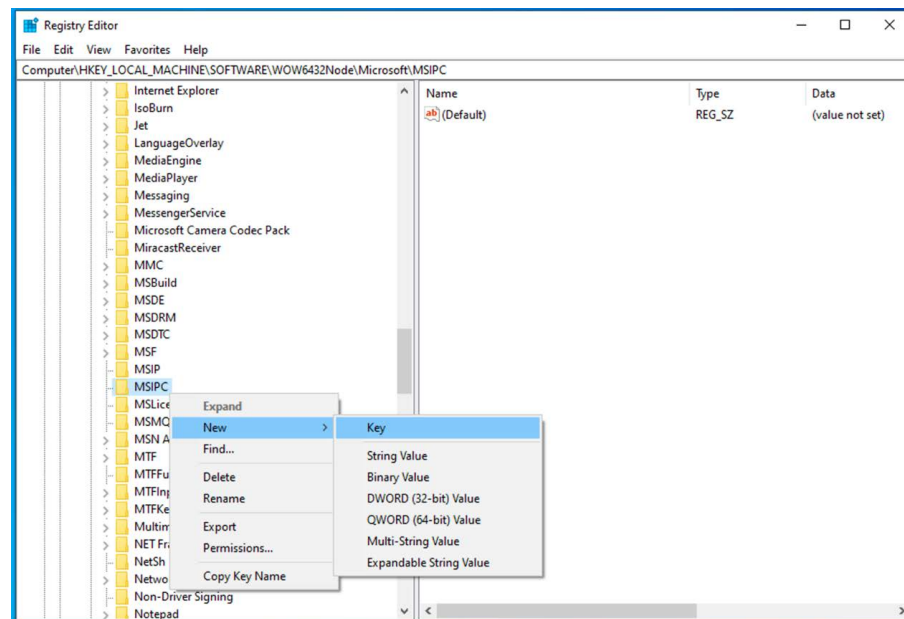
2. Accept the security prompts, if any. The Registry Editor opens and displays the structure of the Windows registries on your computer. If you are running a 32-bit version of Windows, skip steps 3-8 and go directly to step 9.



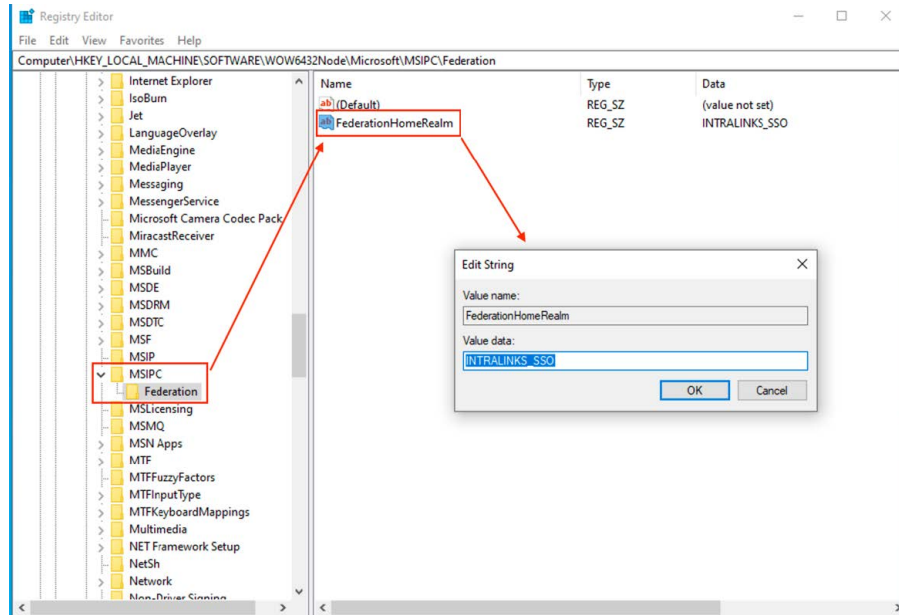
3. Navigate to the following path: **HKEY_LOCAL_MACHINE > SOFTWARE > WOW6432Node > Microsoft > MSIPC > Federation**



If there is no folder named **Federation** under **HKEY_LOCAL_MACHINE > SOFTWARE > WOW6432Node > Microsoft > MSIPC**, create it by right-clicking on the **MSIPC** folder clicking **New**, then clicking **Key**. Name the new key **Federation**.

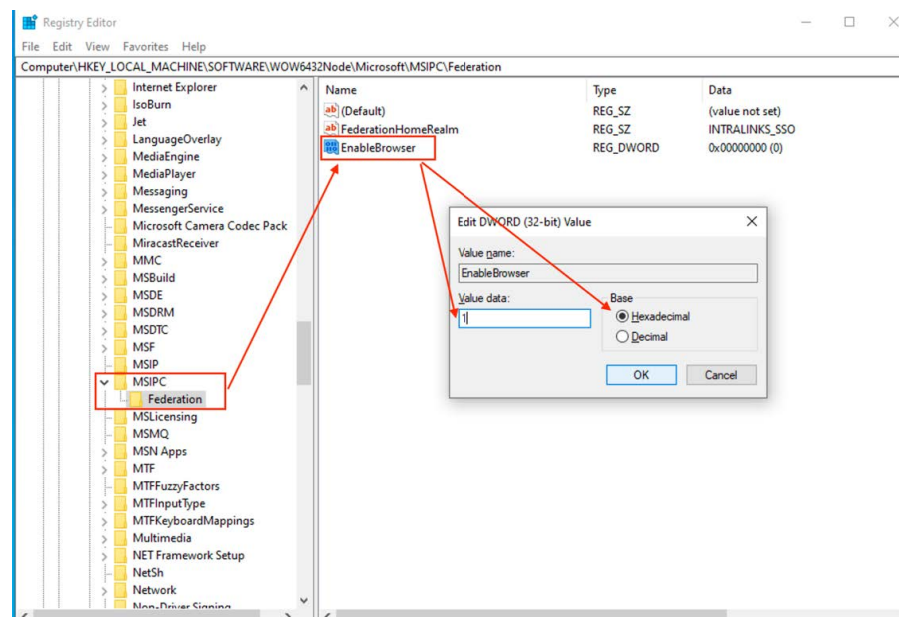


4. Right-click on **Federation** and select **New > String Value**. A new item named New VALue #1 is added in the right page.
 - Rename this item to **FederationHomeRealm**.
 - Double-click on it, and in the **Value Data** field, enter **INTRALINKS_SSO** and click **Ok**.

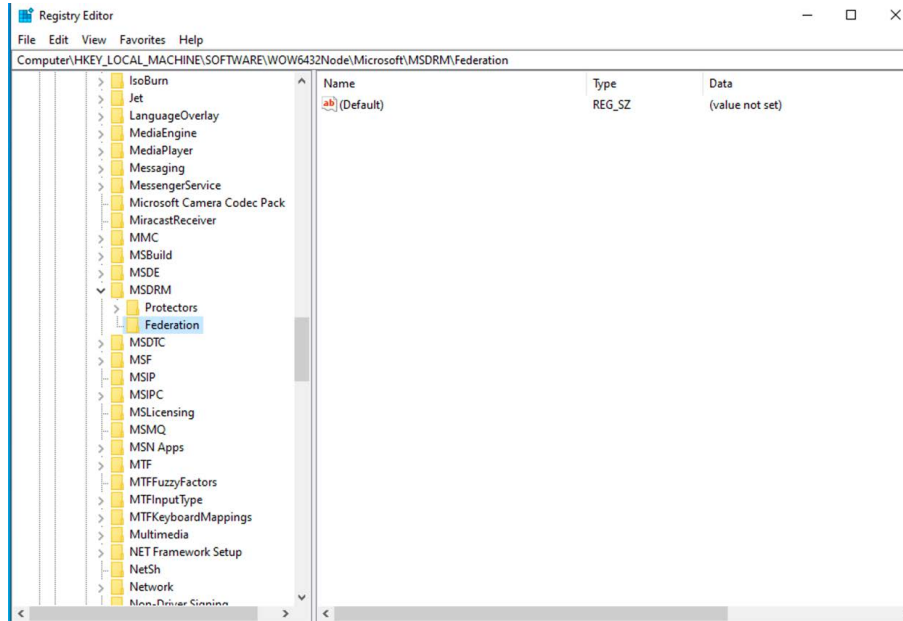


5. Right-click on **Federation** and select **New > DWORD (32-bit) Value**.

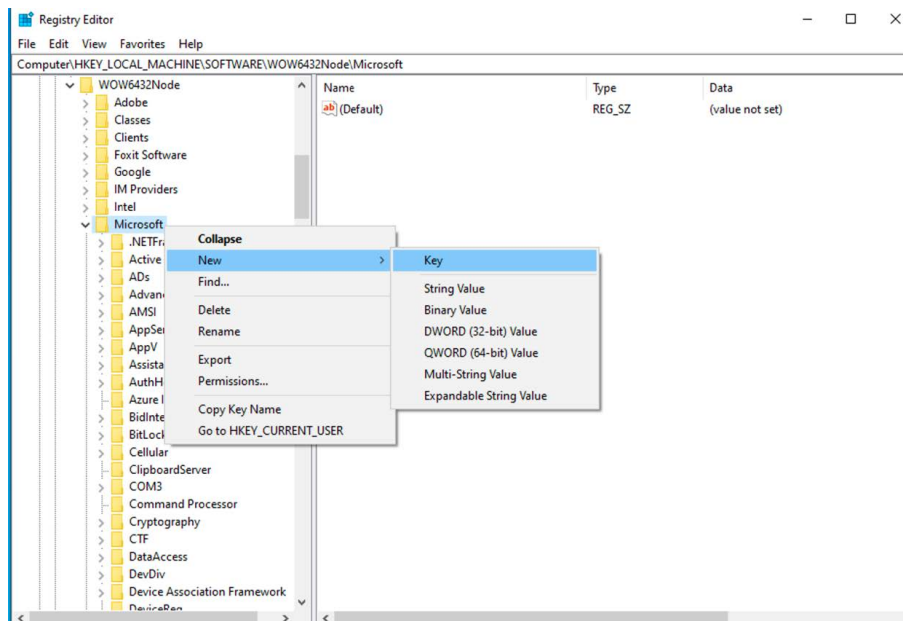
- Rename the newly created item in the right pane to **EnableBrowser**.
- Double-click **EnableBrowser**, in the **Value Data** field, enter **1**.
- Ensure that **Base** is set to **Hexadecimal**.
- Click **Ok**.



6. In the left pane, navigate to **HKEY_LOCAL_MACHINE . SOFTWARE > WOW6432Node > Microsoft > MSDRM > Federation**.

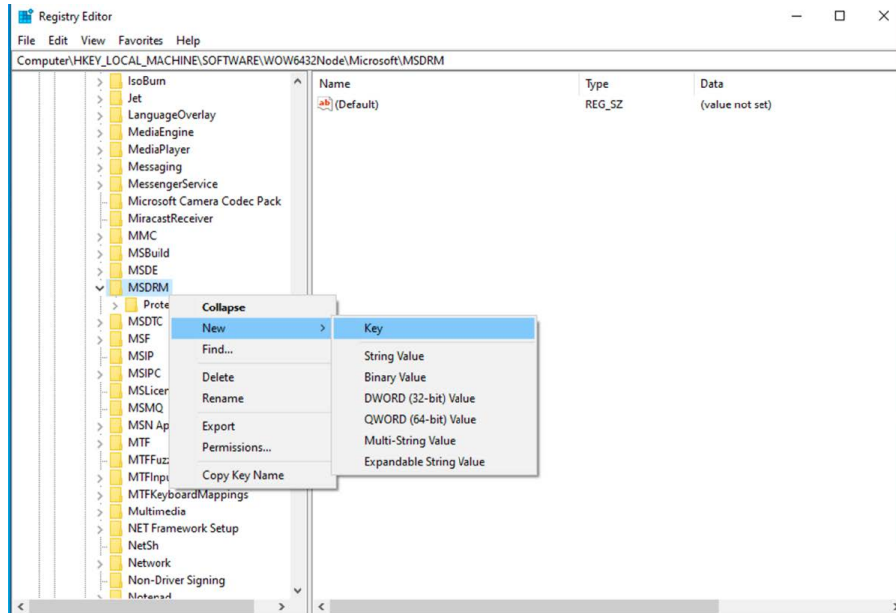


If there is no **MSDRM** folder under **HKEY_LOCAL_MACHINE . SOFTWARE > WOW6432Node > Microsoft > MSDRM**, create it by right-clicking on the **Microsoft** folder and selecting **New**, then **Key**.



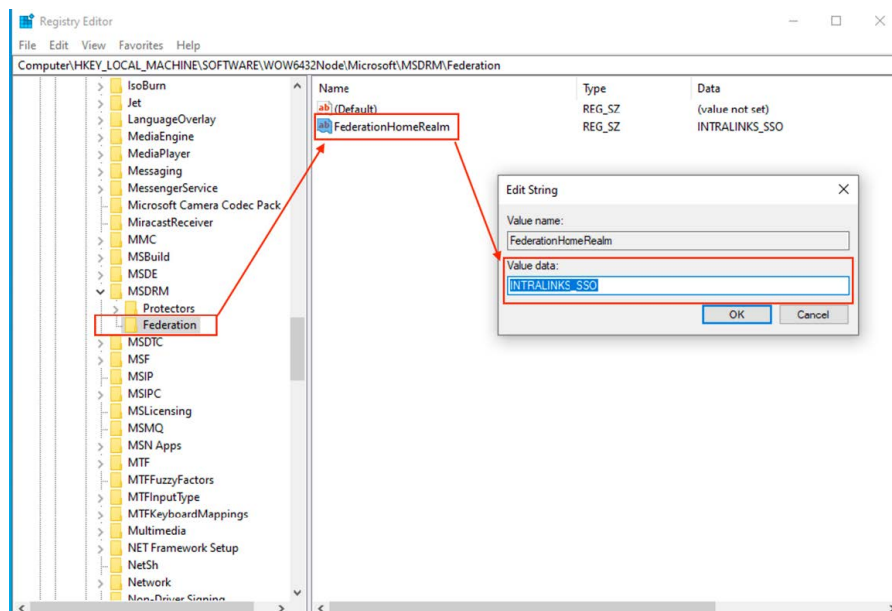
Rename the newly-created key to **MSDRM**.

If there is no **Federation** folder under **HKEY_LOCAL_MACHINE . SOFTWARE > WOW6432Node > Microsoft > MSDRM**, create it by right-clicking the **MSDRM** folder and selecting **New**, then **Key**.



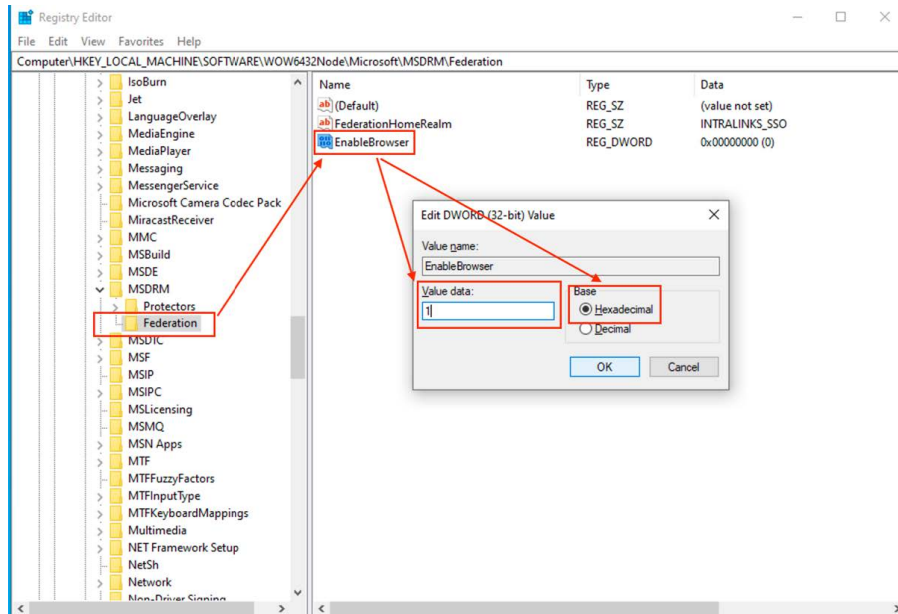
Rename the newly created key to **Federation**.

7. Right click on the **Federation** folder and select **New > String Value**.
 - In the right pane, rename **New Value #1** to **FederationHomeRealm**.
 - Double click on **FederationHomeRealm**.
 - In the **Value Data** field, enter **INTRALINKS_SSO** and click **Ok**.

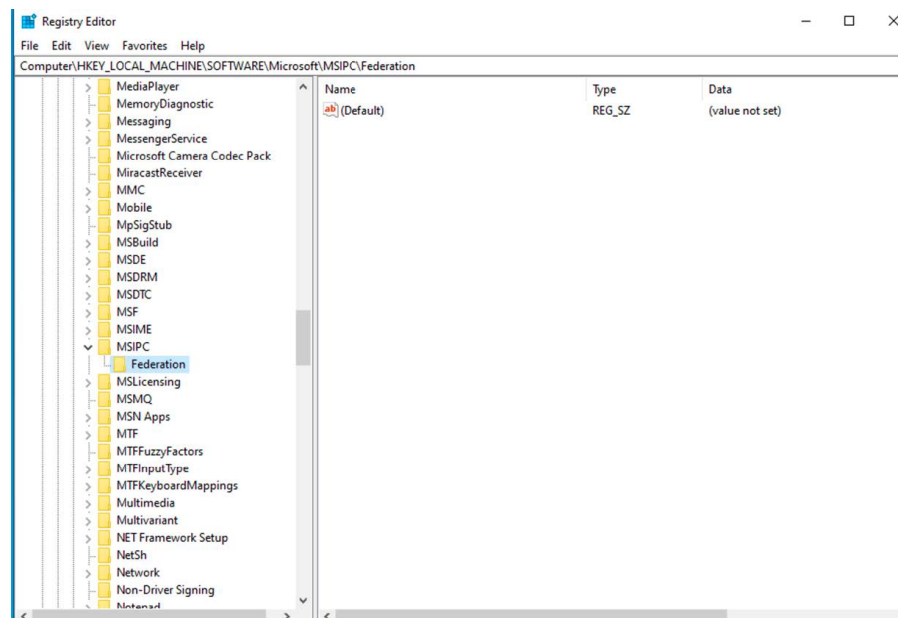


8. Right click on **Federation** and select **New > DWORD (32-bit) Value**.
 - Rename the newly created item in the right pane to **EnableBrowser**.
 - Double click **EnableBrowser**.

- In the **Value Data** field, enter **1**.
- Ensure that the **Base** field is set to **Hexadecimal** and click **Ok**.

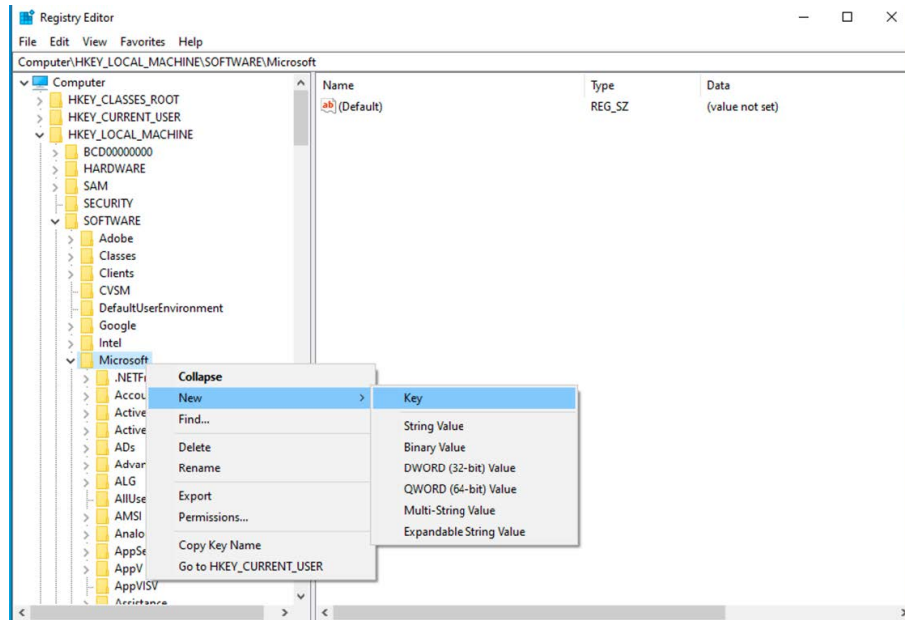


9. In the left pane, navigate to **HKEY_LOCAL_MACHINE > SOFTWARE > Microsoft > MSIPC > Federation**.



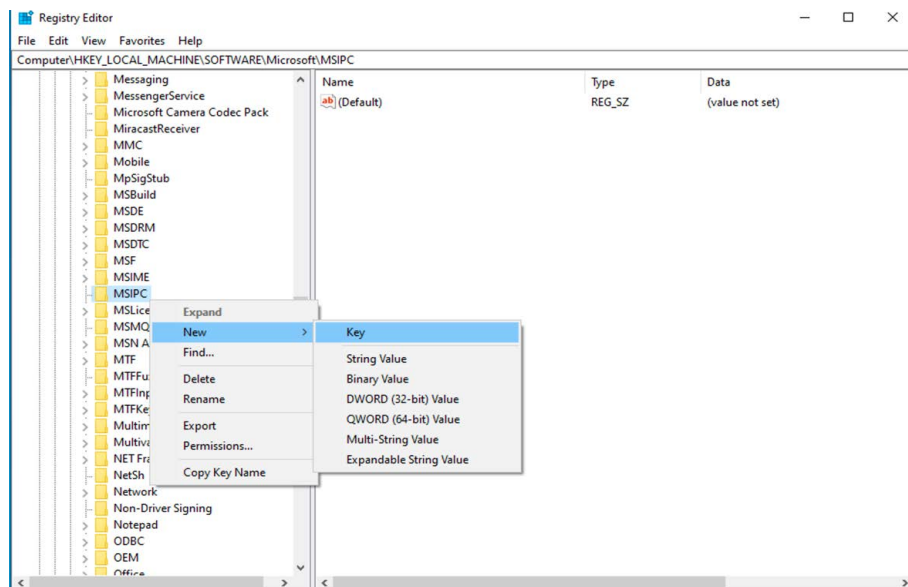
If there is no **MSIPC** folder under **HKEY_LOCAL_MACHINE > SOFTWARE > Microsoft**, create it by right-clicking on the **Microsoft** folder and selecting **New > Key**.

Rename the newly created key to **MSIPC**.



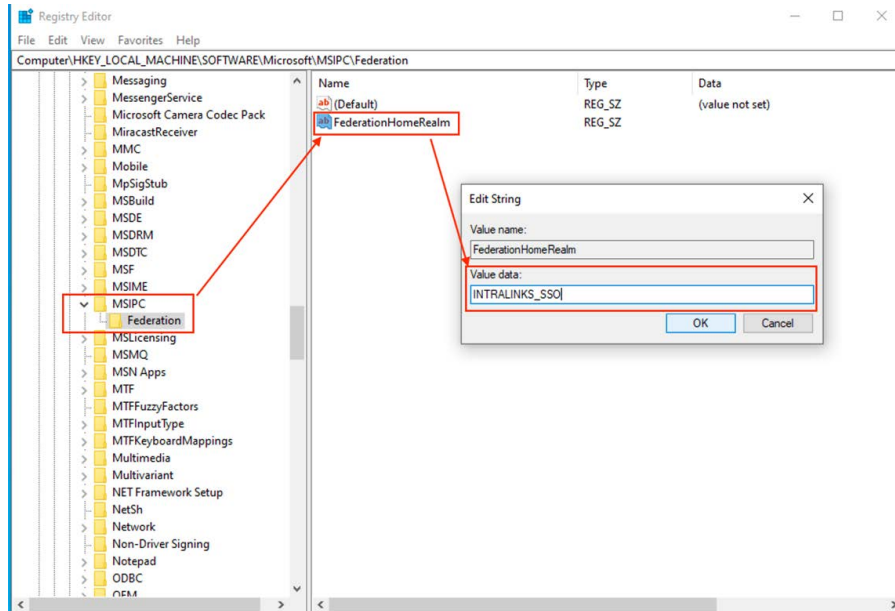
If there is no folder named **Federation** under **HKEY_LOCAL_MACHINE > SOFTWARE > Microsoft > MSIPC**, create it by right-clicking on the **MSIPC** folder and selecting **New > Key**.

Rename the newly created key to **Federation**.



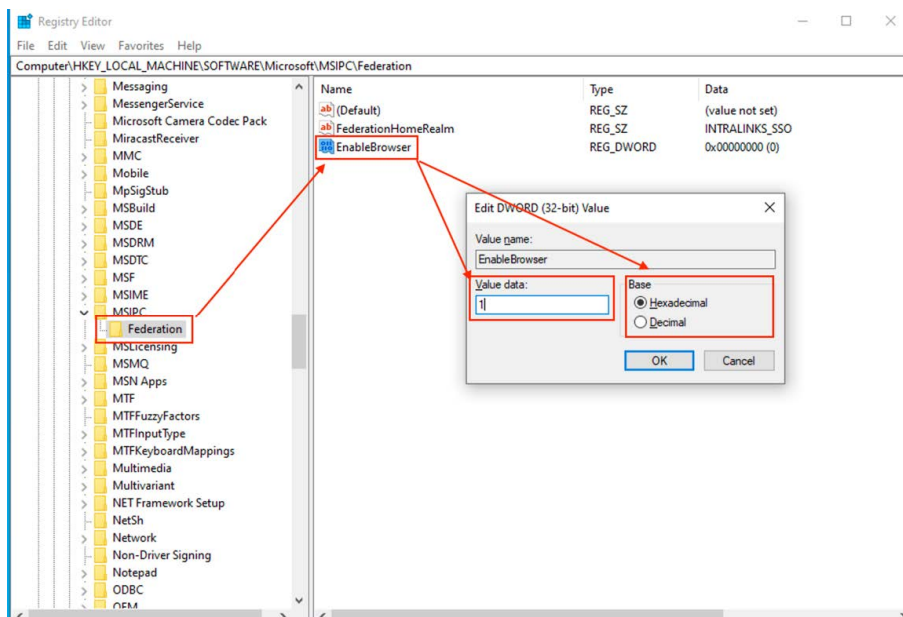
10. Right click on **Federation** and select **New > String Value**.

- In the right pane, rename **New Value #1** to **FederationHomeRealm**.
- Double click on **FederationHomeRealm**.
- In the **Value Data** field, enter **INTRALINKS_SSO** and click **Ok**.



11. Right click on **Federation** and select **New > DWORD (32-bit Value)**.

- In the right pane, rename the newly created item to **EnableBrowser**.
- Double-click on **EnableBrowser**.
- In the **Value Data** field, enter **1**.
- Ensure that the **Base** field is set to **Hexadecimal** and click **OK**.



Setup is complete. If an error occurred during setup or if you are still prompted for a password when opening IRM-protected documents, either use the setup file or contact Intralinks support.

Reverting changes

Delete every item created during setup by right-clicking on them and selecting **Delete**.

Contacting Intralinks support

You can also call Intralinks 24x7x365 support:

- US: + (1) 855 208 7576
- UK: +44 (0)20 7623 8500.

See the Intralinks login page for other national numbers.